

Devon Community Resilience Forum

Including

Met Office Weather Warnings

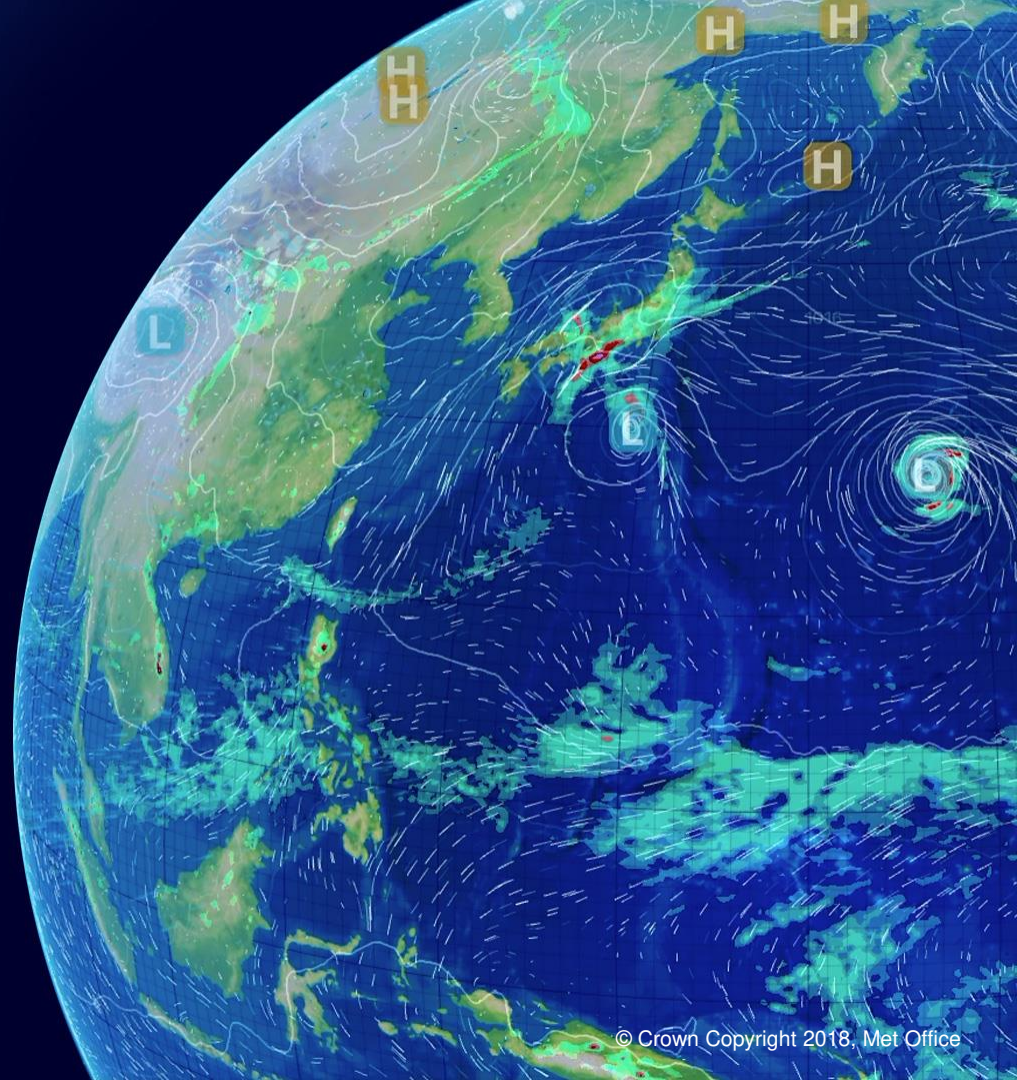
Communicating weather

WeatherReady

Naming Storms 2021/22

Penny Tranter 2022

www.metoffice.gov.uk



Met Office and Community Resilience

The Met Office

UK's national meteorological service
HQ based in Exeter

Critical weather services and
world-leading climate science – help
people and organisations make better
decisions to stay safe and thrive

A key duty is to warn and inform the
public and emergency responders –
ahead, during and post severe weather



Civil Contingency Services



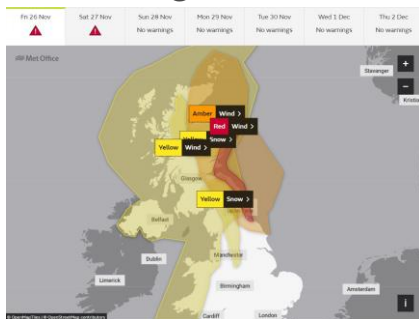
Public Services



Data Services



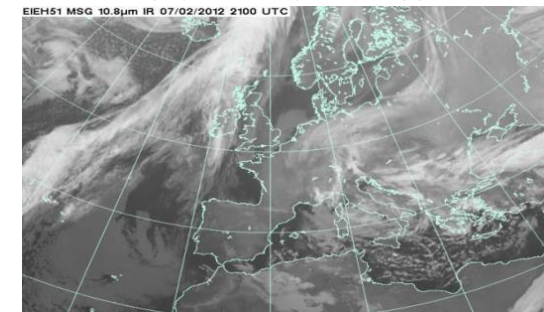
National Severe Weather Warning Service



National Capability

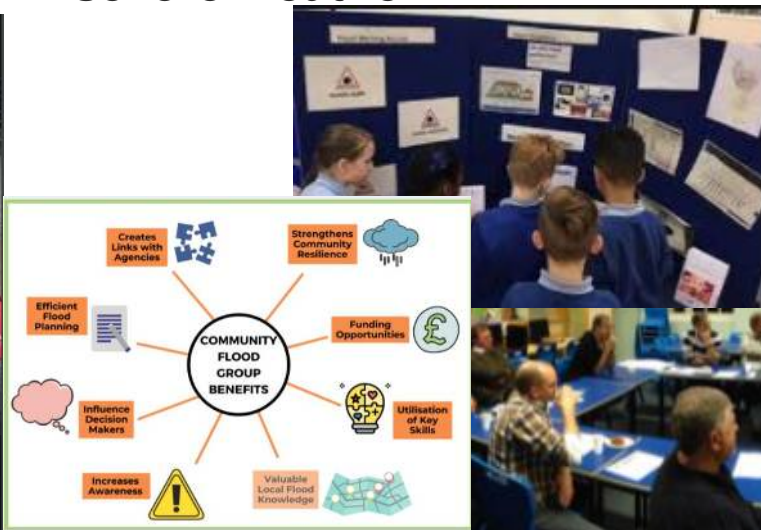


International Commitments



Community Resilience

- Information to help you and your community plan, prepare, respond and recover from severe weather



- <https://www.metoffice.gov.uk/services/government/environmental-hazard-resilience/community-resilience>

National Severe Weather Warning Service

Main Features NOW

Likelihood	High				
	Medium				
	Low				
	Very low				
		Very low	Low	Medium	High
Impact					

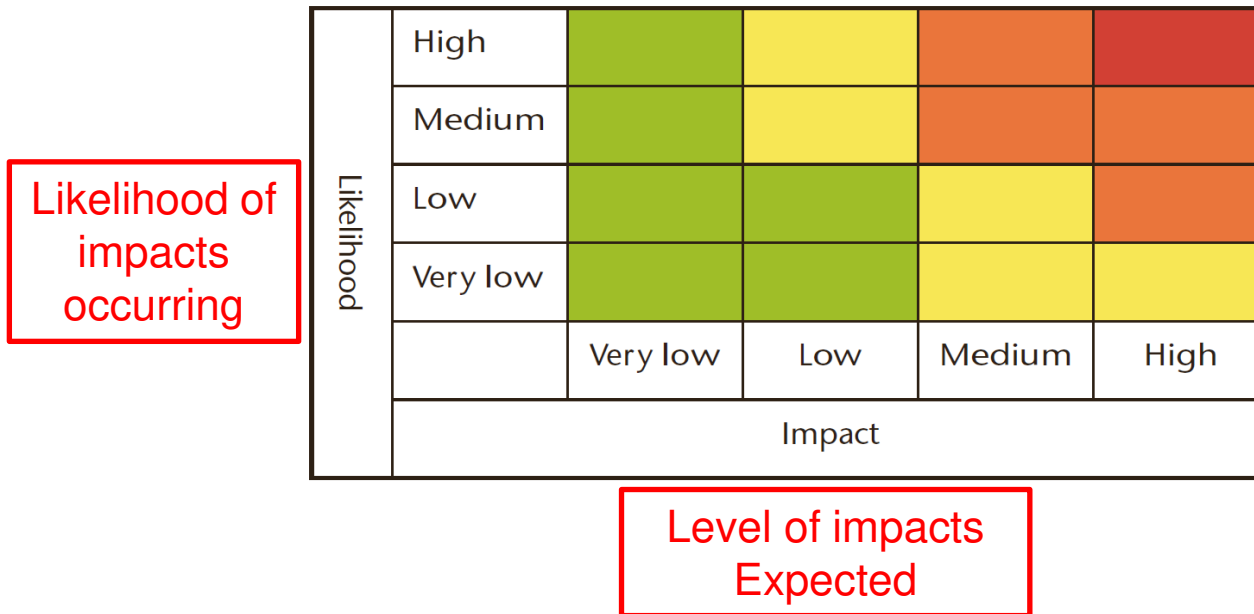
	Very Low	Low	Medium	High
Impact and advice applying to ALL SEVERE WEATHER	<p>On the whole, day to day activities not affected but some localised, small scale impacts occur</p> <p>A few transport routes affected.</p>	<p>Some short lived disruption to day to day routines in affected areas</p> <p>Incidents dealt with under 'business as usual' response by emergency services</p> <p>Some transport routes and travel services affected.</p> <p>Some journeys require longer travel times.</p>	<p>Injuries with danger to life</p> <p>Disruption to day to day routines and activities.</p> <p>Short-term strain on emergency responder organisations.</p> <p>Transport routes and travel services affected. Longer journey times expected. Some vehicles and passengers stranded.</p> <p>Disruption to some utilities and services.</p> <p>Damage to buildings and property.</p>	<p>Danger to life</p> <p>Prolonged disruption to day to day routines and activities</p> <p>Prolonged strain on emergency responders organisations.</p> <p>Transport routes and travel services affected for a prolonged period.</p> <p>Long travel delays. Vehicles and passengers stranded for long periods.</p> <p>Disruption to utilities and services for a prolonged period.</p> <p>Extensive damage to buildings and property.</p>



Up to 7-days ahead

Impact Matrix

Likelihood and Impact are plotted onto a Weather Impact Matrix



Plotting the Likelihood against the Impact allocates the warning a colour.
 The location of the tick in the box is the important element NOT the colour!

Locate the tick!

It is very important that you look to see where the tick is on the matrix. Yellows are not all the same!

Likelihood	High		✓		
	Medium		✓		
	Low				
	Very low				
		Very low	Low	Medium	High
Impact					

Low impacts – short lived response / impacts – mostly BAU (business as usual)

Likelihood	High				
	Medium				
	Low				
	Very low			✓	✓
		Very low	Low	Medium	High
Impact					

Medium/High impacts / prolonged response – risk to life?

Understanding Impacts

Emergency responders defined the levels of impact – ensures impacts in the warnings match their perceptions and pressures.

Impact Levels for All Weather Types			
Very Low	Low	Medium	High
<p>On the whole, day to day activities not affected but</p> <p>'NORMAL WEATHER'</p> <p>affected.</p>	<p>Some short lived disruption to day to day</p> <p>'BUSY DAY'</p> <p>under 'business as usual' response by emergency services</p> <p>Some transport routes and travel services affected. Some journeys require longer travel times.</p>	<p>Injuries with danger to life</p> <p>SHORT TERM STRAIN ON EMERGENCY SERVICES</p> <p>Transport routes and travel services affected. Longer journey times expected. Some vehicles and passengers stranded.</p> <p>Disruption to some utilities and services.</p> <p>Damage to buildings and property.</p>	<p>Danger to life</p> <p>PROLONGED STRAIN ON EMERGENCY SERVICES</p> <p>Transport routes and travel services affected for a prolonged period. Long travel delays. Vehicles and passengers stranded for long periods.</p> <p>Disruption to utilities and services for a prolonged period.</p> <p>Extensive damage to buildings and property.</p>



Assessing the risk

Location

Rural



Urban



Coastal



Current conditions

Plenty



Deficit



Time of day/
week/year

Quiet



Busy

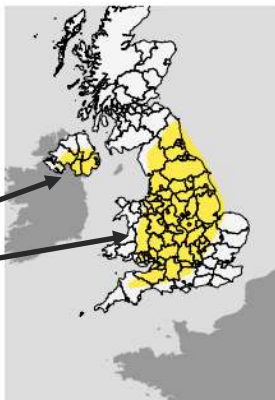


Summer



Winter



**Yellow warning
Thunderstorm**Between
12:00 Sat 21 Aug 2021 and
22:00 Sat 21 Aug 2021**Many places missing the worst, but heavy showers and thunderstorms may cause some transport disruption and perhaps flooding.****What to expect**

- There is a good chance driving conditions will be affected by spray, standing water and/or hail, leading to longer journey times by car and bus
- Delays to train services are possible
- Some short term loss of power and other services is possible, with possible damage due to lightning strikes
- Flooding of a few homes and businesses could occur.

Further details

Following rain overnight and during the morning, heavier showers and thunderstorms are likely to break out by late morning. These becoming more widespread into the afternoon, with torrential downpours possible in a few places, bringing around 20 mm of rain in less than an hour and 30-40 mm in a couple of hours. Lightning and hail may prove additional hazards in some locations.



✓ Medium likelihood of low impacts

Issued at 10:06 Fri 20 Aug, 2021

For enquiries regarding this warning please contact the Met Office Weather Desk

Phone: 0370 900 0100 E-mail: enquiries@metoffice.gov.ukVisit: www.metoffice.gov.uk/premium/hazardmanager

Validity Time

Weather Element
and colourHeadline:
(<140 characters)

Area/s Covered

What to Expect:
Likely impacts

Further Details

Impact Matrix

Issue Date/Time

Update Date/Time

Monitoring Warnings

Importance of keeping up to date:

- allows us to be proactive rather than reactive
- gives us a early heads-up of what is coming
- enables us to prepare and put plans into place

 **Wessex Water** @wessexwater · Feb 23
It's feeling chilly again ❄️ so here's our advice to help wrap up your home & protect it from any frozen pipes.

- ✓ Fix any dripping taps
- ✓ Check your internal stop tap is working
- ✓ Ensure pipes in cold areas are insulated
- ✓ Consider leaving your heating on low if you go away



Top tips to help keep cool in a heatwave



Check on neighbours and relatives who live alone to make sure they're not having difficulties in the heat.



When travelling always carry a bottle of water and drink lots of fluids



If you spot someone with symptoms of heat exhaustion, help them find a cool place to sit, and call NHS 111 if you need any further advice



Plan ahead by checking forecasts and weather warnings