

**Devon, Cornwall & Isles of Scilly  
Local Resilience Forum**

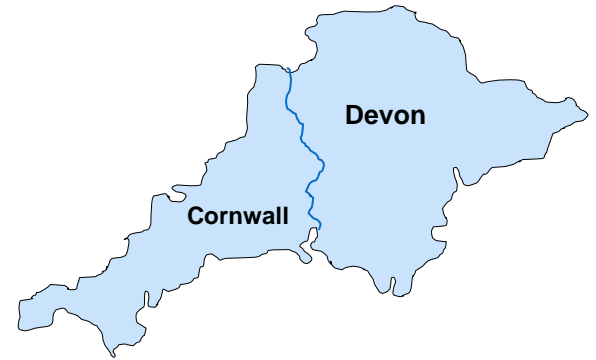
**Command structures and  
Information sharing  
in an emergency  
DCRF June 2018**

**Neil Hamlyn  
Local Resilience Forum Manager**



# LRF Manager

- ▶ Police staff - funded by the partners
- ▶ Manage the work of the LRF
- ▶ Single point of contact for Government, LRF and public
- ▶ Work in the Strategic Co-ordination Centre (SCC) during a major incident, Police HQ, Exeter.





# You never expect the unexpected!

## 10 years in a quiet part of the country...

- ▶ Terrorism
  - ISIS Suicide bomber
  - IRA – guns & bombs
- ▶ Floods
  - Coastal
  - Rivers
  - Groundwater/ dams
- ▶ Storms (Snow, wind, lightning)
- ▶ Helicopter and plane crashes
- ▶ H1N1 Swine Flu
- ▶ Animal health - Bird Flu/Asian Hornet
- ▶ Nuclear leaks
- ▶ Marauding gunman
- ▶ Commercial boats sinking /cargo
- ▶ Major RTC/ coach crashes
- ▶ Cyber attacks
- ▶ Power outage
- ▶ Water contamination
- ▶ Major Fires – city centre and mass residential evacuation
- ▶ Ebola and MERS
- ▶ Bovine TB
- ▶ Boating/ tourist tragedies
- ▶ Volcanic eruptions
- ▶ ....no Zombies but Dolphins



# The Duties: 'What we must do'

Have a planned and co-ordinated approach for the following:

- Risk assessment of emergencies in the LRF
- Plan for emergencies
- Have arrangements to warn and inform the public
- Plan for business continuity management
- Promote business continuity to businesses (local authorities)
- Share information
- Co-operate

This will allow us to better respond to emergencies (known as major incidents)...



# Category of Responders

## Category 1 responders:

- police forces, fire services, ambulance services
- local authorities (13)
- NHS England, Public Health England, port health authorities
- hospitals with provisions for accidents and emergencies
- Environment Agency;
- Maritime and Coastguard Agency (MCA)

## Category 2 responders:

- utilities (water, sewerage, gas, electricity)
- telecommunications service providers
- railway operators
- airport operators
- harbour authorities
- Highways England
- Health and Safety Executive

## Non Category responders:

- Met Office
- Military
- Animal Health
- Resilience Emergencies Division (Government)
- British Red Cross



# What is an EMERGENCY?

An 'Emergency' is defined as an event or situation which threatens serious damage to:

**human welfare** in a place in the United Kingdom

the **environment** of a place in the United Kingdom

or

the **security of the United Kingdom or of a place in the United Kingdom.**



# What is a MAJOR INCIDENT?

...any emergency that requires the implementation of special arrangements by one or more of the emergency services, the NHS (health) or the local authority.



# ACTIVATION

When does the LRF setup?

What are the triggers?

What does this look like?

How do we share information?



# Types of Activation

## Rising Tide



Human disease  
(pandemic flu)

Severe  
weather



*We have time to prepare*





# Types of Activation

## Rapid onset/sudden impact

Fires



Terrorist attack



*Instant activation and response*

Catchment flooding





# Activation – how we do it

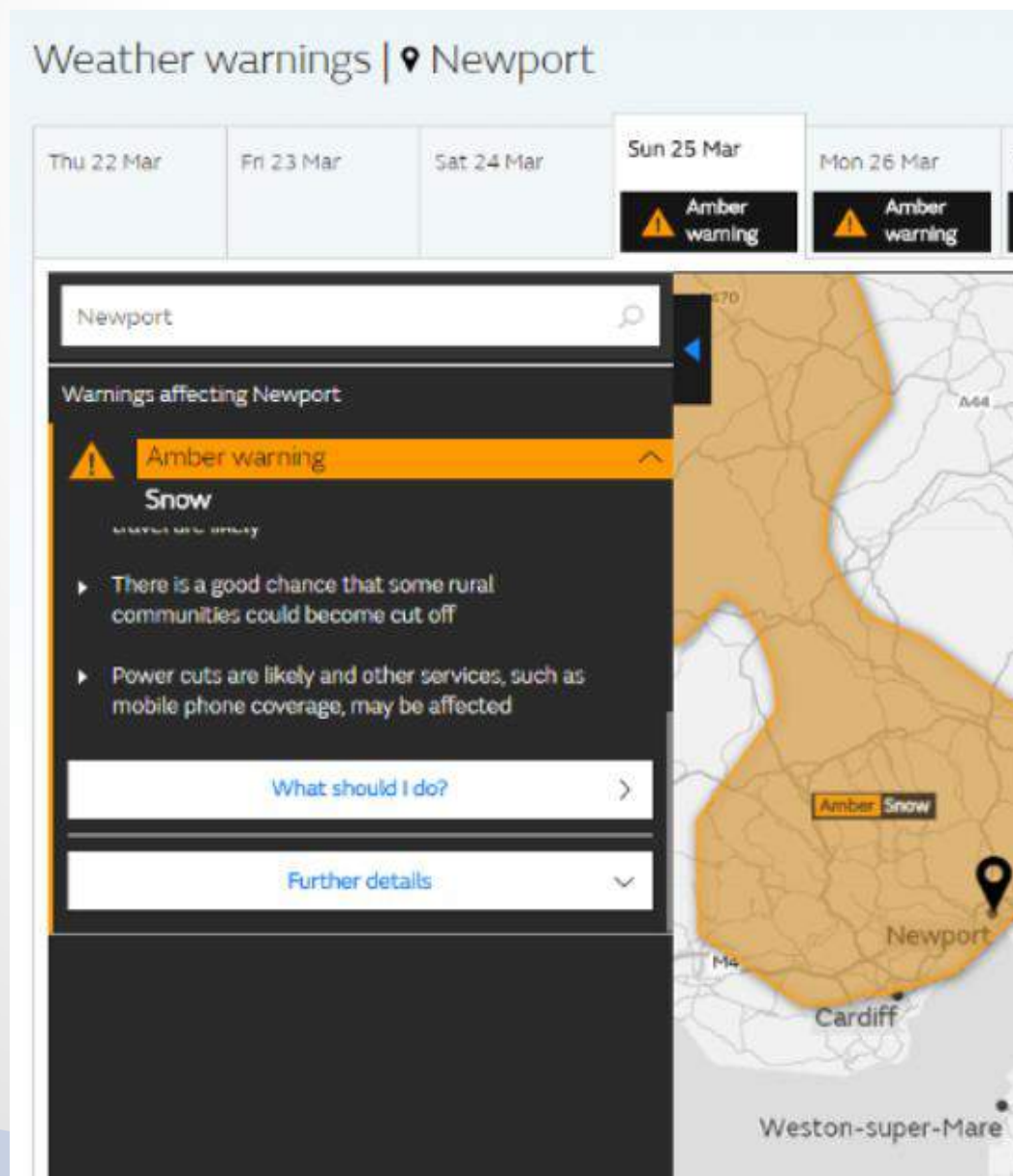
## Rising tide example

Weather reporting rain and flooding, public see weather maps like this...

Public notifications and warnings

Warnings:

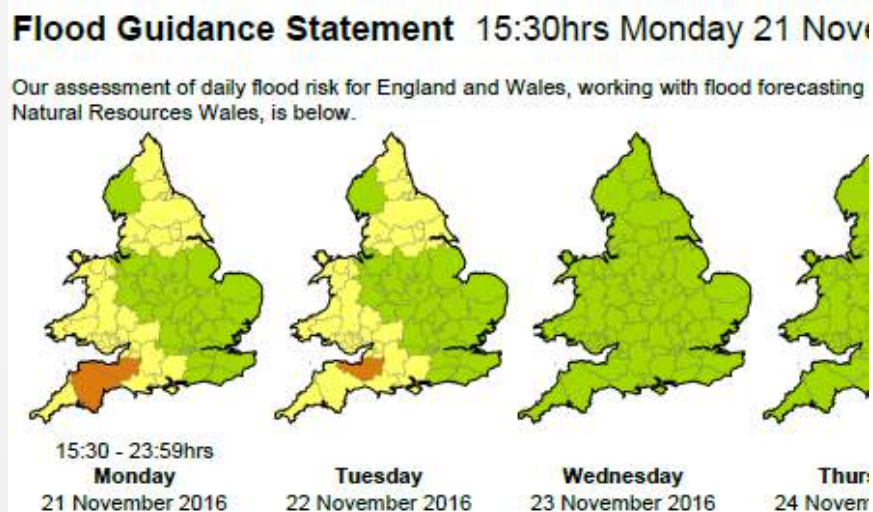
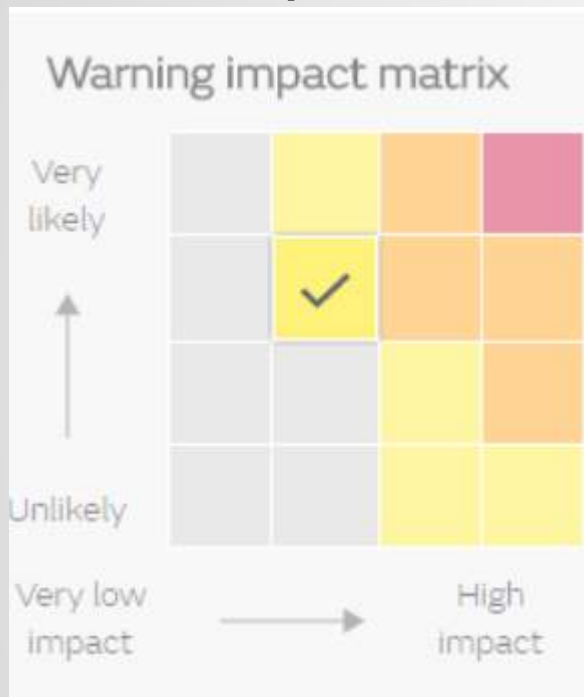
Yellow Amber Red





# Activation – how we do it

LRF responders receive detailed warnings



We may activate on a yellow warning with high impacts

Always activate on **Amber** and **Red** warnings



# Activation

Operation Link – emergency cascade plan

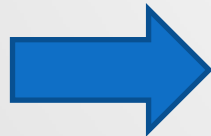
Any responder - call the Police Control Room



Direct line number (not 999)



Inform  
Police  
Contingency  
Planning team &  
LRF Manager



Decision on escalation level, rising tide usually...



**PRE EVENT ASSESSMENT TELECON**



# Pre Event Assessment Telecon (PEAT)

Used for a rising tide event specifically for upcoming severe weather, usually as a result of the Daily Hazard assessment and FGS.

## Daily Hazard Assessment

**Issued 13:49 on Monday, 05 December 2016**


*The Daily Hazard Assessment is intended to provide an 'at a glance' top level overview only. The links provided to the relevant Partner Organisations should then be used to obtain further and more detailed information as required.*

**Hazards Five-Day Summary: EXTREME TEMPERATURES: YELLOW, FOG: YELLOW.**

**EXTREME TEMPERATURES (England Only):-** A level 2 cold weather alert is in force until Tuesday, across the north of England.

**FOG:** Areas of fog are expected to form overnight across some eastern and central parts of England tonight.

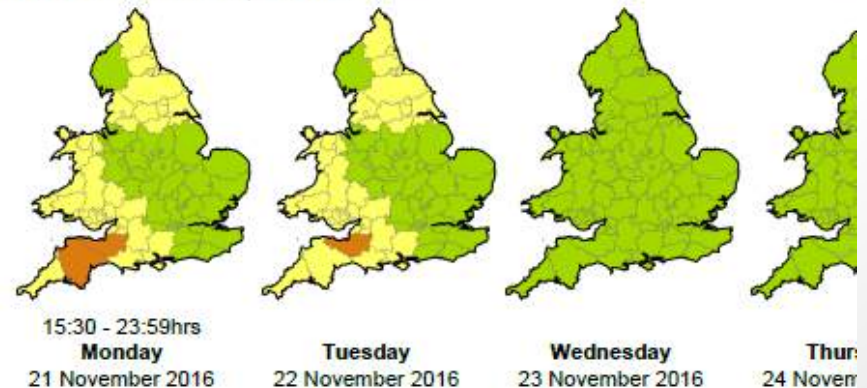
## Hazards Five-Day Summary Maps

Monday 05-Dec 1400 – 2359	Tuesday 06-Dec 0000 – 2359	Wednesday 07-Dec 0000 – 2359	Thursday 08-Dec 0000 – 2359	Friday 09-Dec 0000 –
				



## Flood Guidance Statement 15:30hrs Monday 21 Nov

Our assessment of daily flood risk for England and Wales, working with flood forecasting Natural Resources Wales, is below.



## Cold Weather Alert Planning Advice

Tel: 0370 900 0100 [www.metoffice.gov.uk](http://www.metoffice.gov.uk)

Forecast Issued on Friday, 02 December 2016 at 09:08



Page 1 of 2

### Forecast for Fri 02 Dec 2016 to Tue 06 Dec 2016

General Situation: Slightly less cold, frosty conditions for today (Friday) and at first on Saturday. However, through the weekend a brisk easterly airflow is expected to develop, bringing a return to clearer conditions along with a return to more widespread overnight frosts away from the far southwest. A Level 2 Cold Weather Alert is



# Running a PEAT

Small group:

- Police led – coordinate the cascade
- Met Office
- Environment Agency
- Local Authorities – intimate knowledge of their local area, history, wind direction effects



Decision time



Assess all the **information – situational awareness**

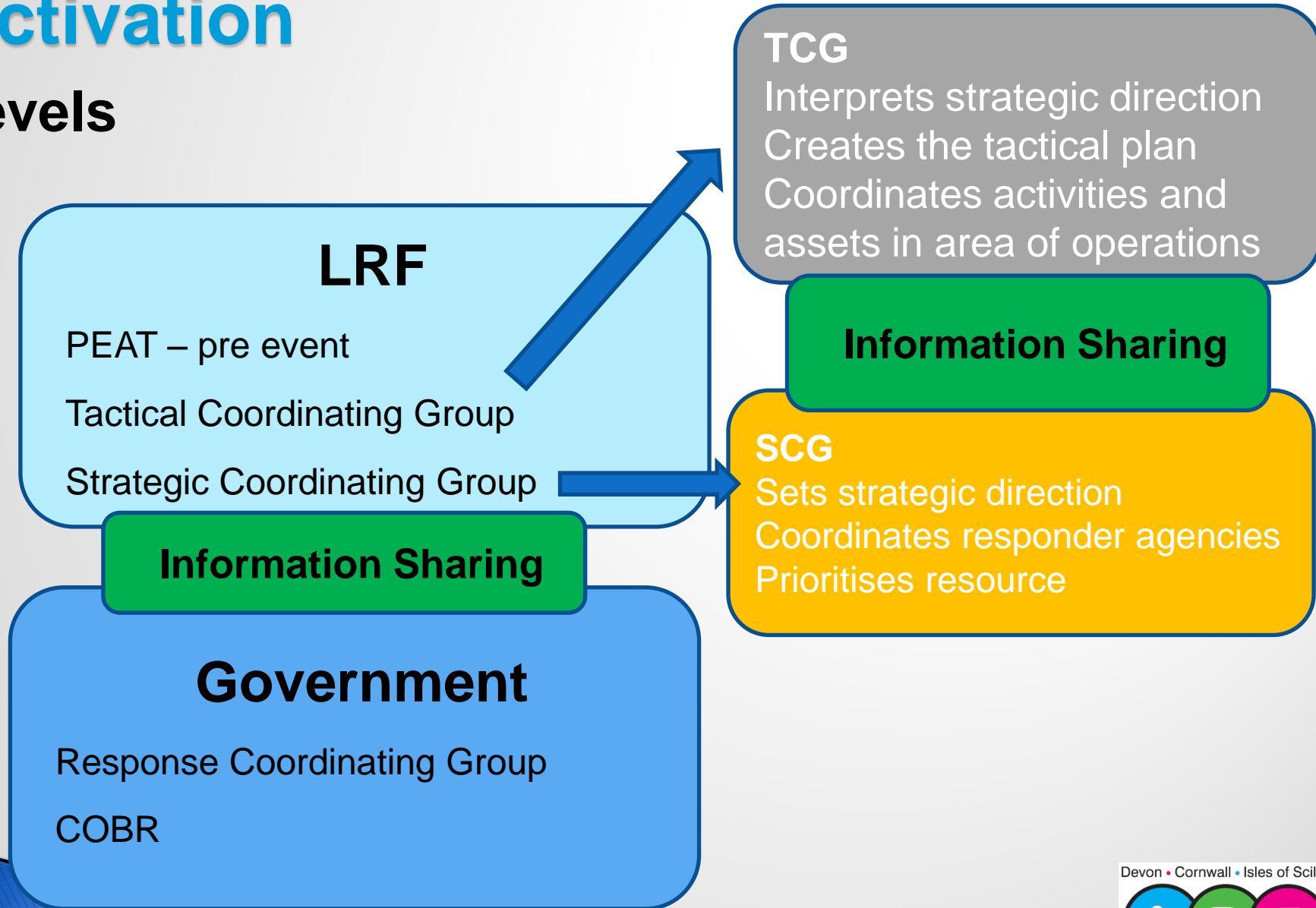
Consolidated and agreed decision on what happens next

- May await next update, may escalate further
- Ensures that everybody moves on to standby – preparations made



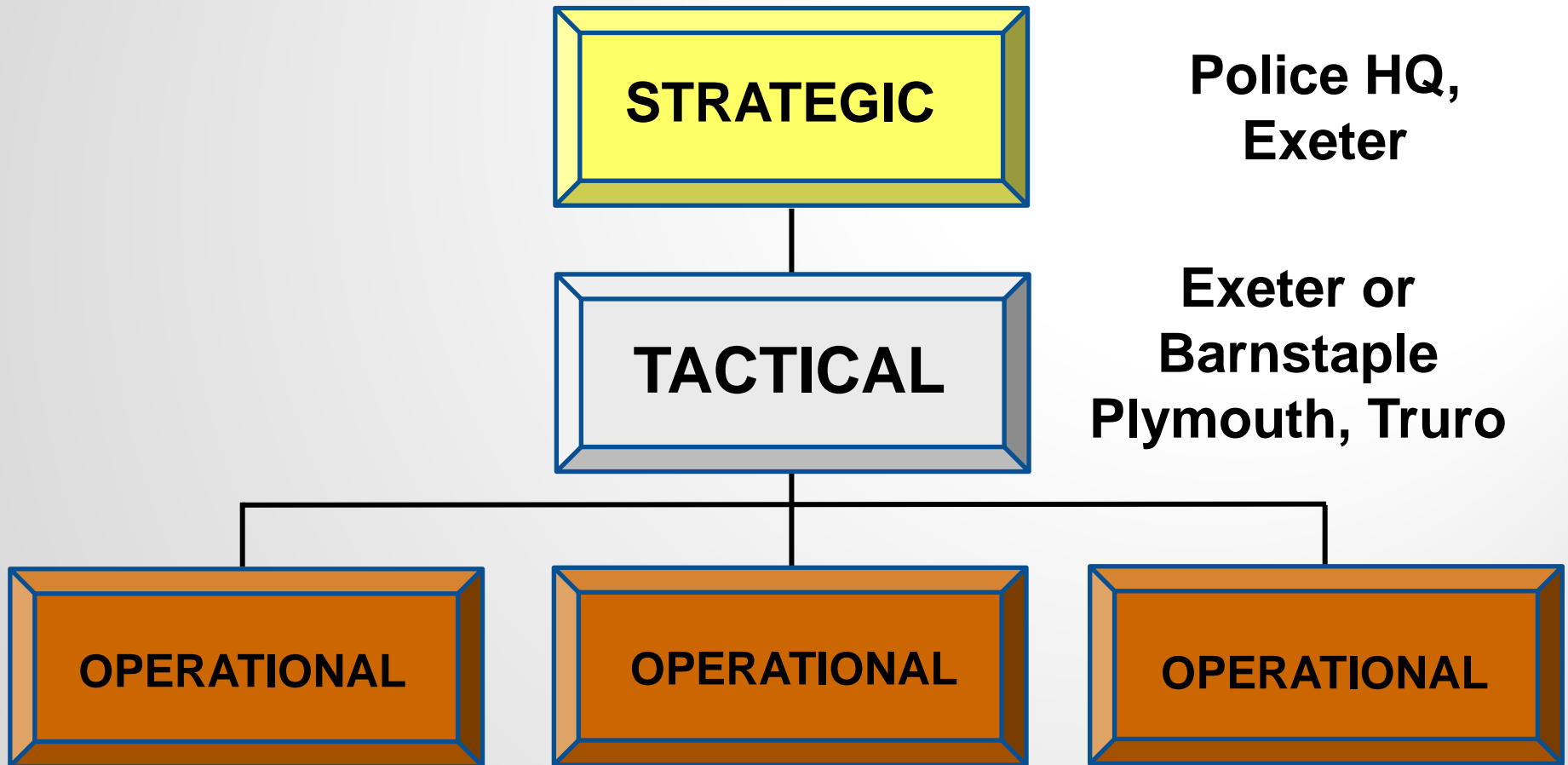
# Activation

## Levels





# Basic Command Structure



**Police HQ,  
Exeter**

**Exeter or  
Barnstaple  
Plymouth, Truro**

Executes the tactical plan  
Commands single service response  
Coordinates actions at the scene



# Category of Responders

## Category 1 responders:

- police forces, fire services, ambulance services
- local authorities (13)
- NHS England, Public Health England, port health authorities
- hospitals with provisions for accidents and emergencies
- Environment Agency;
- Maritime and Coastguard Agency (MCA)

## Category 2 responders:

- utilities (water, sewerage, gas, electricity)
- telecommunications service providers
- railway operators
- airport operators
- harbour authorities
- Highways England
- Health and Safety Executive

## Non Category responders:

- Met Office
- Military
- Animal Health
- Resilience Emergencies Division (Government)
- British Red Cross



# Strategic Co-ordinating Group



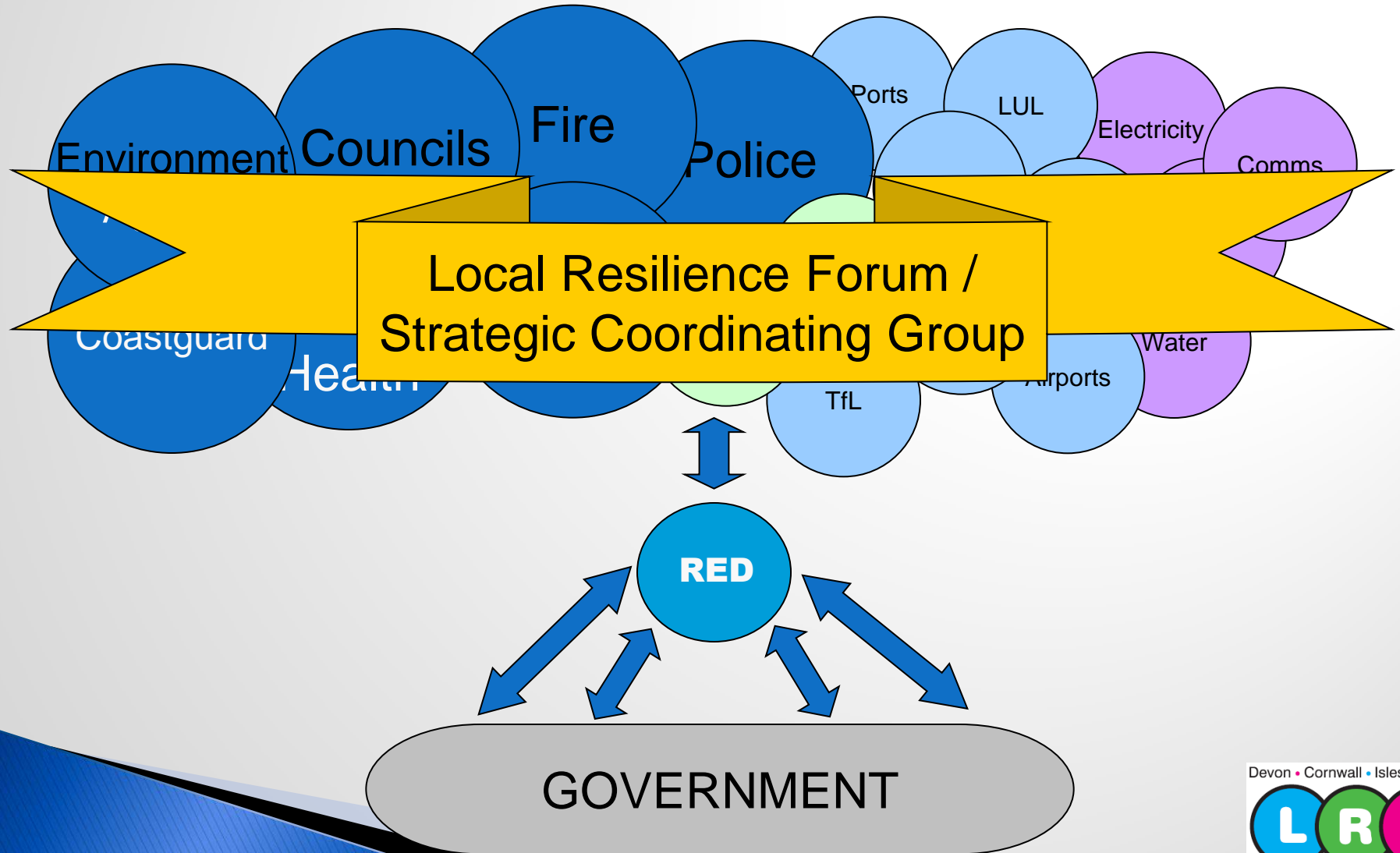


# Operational



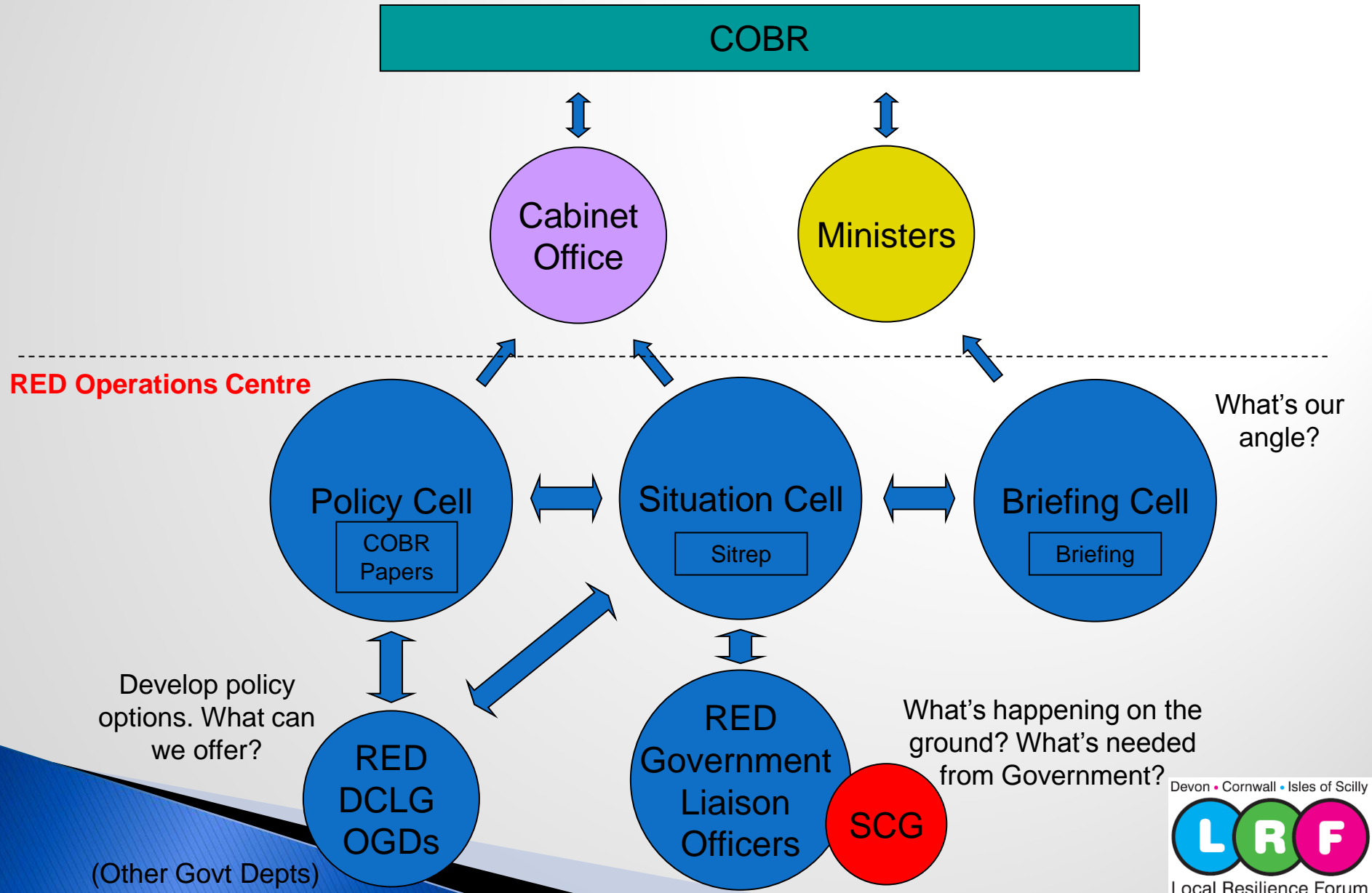


# One link to Government through DCLG RED





# A typical RED Operations Centre





# Information Sharing

**METHANE** is used in coordination centres/control rooms and at the scene...

**Major incident declared?**

**Exact location**

**Type of incident**

**Hazards**

**Access to scene**

**Number and severity of casualties**

**Emergency services at scene**





## Welcome to ResilienceDirect

### British Red Cross Community Volunteers

British Red Cross are launching a new initiative harnessing support from local communities in an emergency.

[READ MORE](#)

**BritishRedCross**



### Responses

- BwD TCG 13.11.17 - V10 Polymers Fire
- ASLRF Exercise Saxon Resolve
- Water outage - Cheltenham area
- Bournemouth Electrical Disruption
- Exercise Defoliants - 19 Oct 2017 1000 Hrs
- Gas Leak
- Exercise Grey Titan
- Durham and Darlington Exercise Root
- Parsons Green Tube Bomb
- WILTS - National Move to Critical - 15.09.17
- Weymouth Jurassic Tower
- Power outage in the West and South Dorset area
- RD familiarisation Exercises

### ResilienceDirect Mapping Release

The ResilienceDirect(RD) Team are pleased to announce the next RD Mapping release, scheduled to be uploaded on Thursday evening, available to the mapping user community from Friday morning, 17<sup>th</sup> November.



## 20/11/2016: Flooding - Storm Angus - LRF area

### Incident Overview

#### Tue 22/11/16 1300 Railway closure update

Photo from Network Rail of the damage at Cowley Bridge below. . Update from Network Rail: Exeter to Barnstaple line closed until further notice; Exeter to Waterloo, London is fully open; Exeter to Paddington line intends to open at 0400hrs Thu 24/11/16. Devon Flood Recovery Group met today to discuss their process and actions that may be required post the storm. Although river levels came close in some areas across Devon; properties affected or flooded, figures of 27-50 were mentioned but most seem unconfirmed. The RCG members will continue to gain confirmed numbers. RCG will no longer meet unless required.



### Responses

- BwD TCG 13.11.17 - V10 Polymers Fire
- ASLRF Exercise Saxon Resolve
- Water outage - Cheltenham area
- Bournemouth Electrical Disruption
- Exercise Defoliants - 19 Oct 2017 1000 Hrs
- Gas Leak
- Exercise Grey Titan
- Durham and Darlington Exercise Root
- Parsons Green Tube Bomb
- WILTS - National Move to Critical - 15.09.17
- Weymouth Jurassic Tower
- Power outage in the West and South Dorset area
- RD familiarisation Exercises
- Exercise Hagar Awel 20170815
- 2017 07 13 Ex. TELSTAR
- Grenfell Tower Fire - Local Actions
- Heatwave - 2017
- Finsbury Park Mosque - Lancashire Response





[Dashboard >>](#) [Planning >>](#) [Resilience Forums and Partnerships >>](#) [England >>](#) [DCIOS LRF Planning >>](#) [DCIOS LRF Response >>](#) [Archived Responses >>](#) [LRF DCIOS Manchester Arena Attack](#)

Threat level change back to SEVERE



★ FAVOURITE

EDIT

ADD

## 22/05/2017: LRF DCIOS Response to Manchester Arena Attack - Manchester Arena

### Incident Overview

#### FINAL UPDATE 30th May 1350hrs

As part of the ongoing investigations into the terrorist incident in Manchester on Monday night; the Prime Minister announced that the independent Joint Terrorism Analysis Centre (JTAC) had raised the UK threat level from "severe" to "critical". As a result of this decision Operation Temperer was activated in a phased approach, meaning that military personnel were available to be deployed onto the streets under Police command and control. This was part of a well-rehearsed plan. You will be aware that the risk level has now been reverted to back to severe, which means at this time these measures will be stood down. Normal business as usual measures are in place.

### Page documents

- Events list assessed by DC Police 2017.05.25 (14KB)
- SW CT Security Update 2017.05.25 (86KB)
- Move to Critical Guidance for Local Authority Chief Execs (637KB)
- Agenda SCG Partners Briefing Op Haven 2017.05.24 1400hrs (17KB)
- Manchester attack advice for website CSSC and CPIE (002) (110KB)
- Security Minded Communications - a case study (378KB)





[Dashboard](#) >> [Planning](#) >> [Resilience Forums and Partnerships](#) >> [England](#) >> [DCIOS LRF Planning](#) >> [DCIOS LRF - File Store](#) >> 07. Plans

★ FAVOURITE

EDIT

ADD

## DCIOS LRF Planning

- [Animal Disease](#)
- [CBRN](#)
- [Flooding](#)
- [Fuel](#)
- [HAES](#)
- [Health](#)
- [Isles of Scilly](#)
- [Mass Fatalities](#)
- [Recovery](#)
- [SAR](#)
- [SCC](#)
- [Severe Weather](#)

## 07. Plans

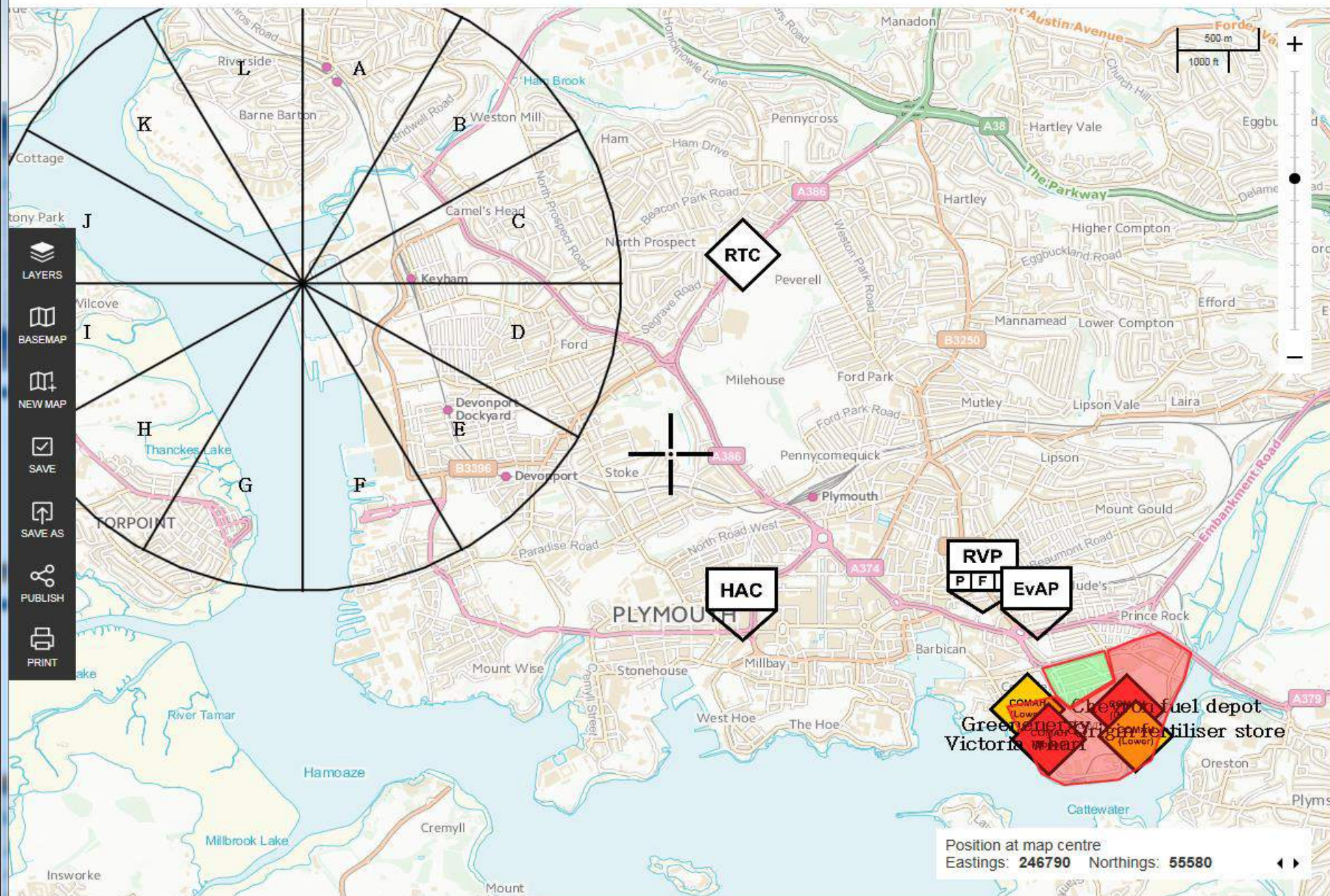
There are numerous LRF multi-agency plans and frameworks which are available through the pages on the left. Generic plans such as Operation Link, the emergency cascade callout plan and list are featured below.

Plans marked as OFFICIAL SENSITIVE should be treated as per previously marked RESTRICTED documents.

Name	Protective marking	Check in/out	Send alert	More
<b>Agency Situation Report Template (v3_2 2015_05_11) (54KB)</b>	Official			
<b>DC Drought Plan v4 July 2016 (1.75MB)</b>	Official			
<b>Draft SW Tyres (AKA Consort) Multi Agency Plan (2.81MB)</b>	Official - sensitive			

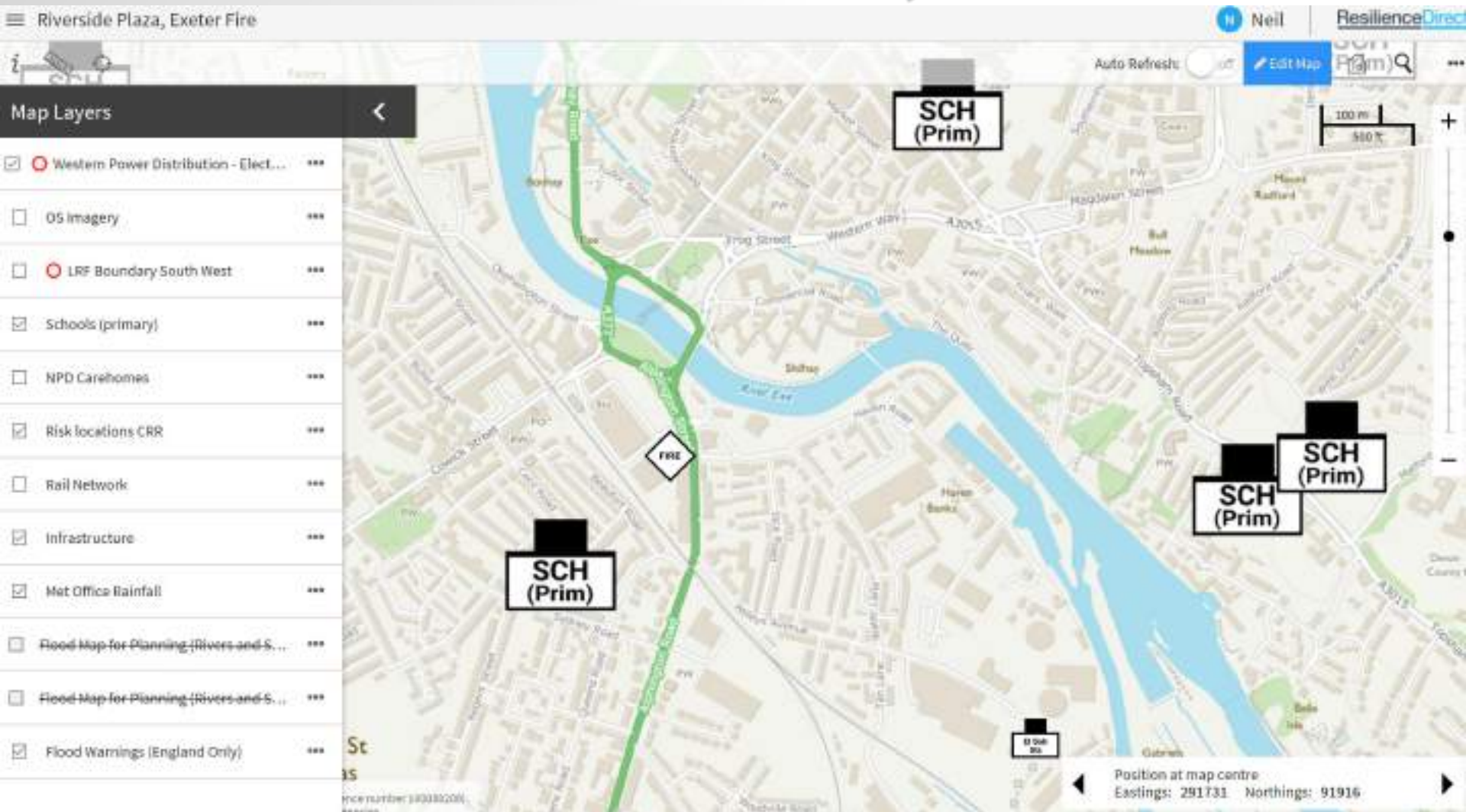


## Exercise Aries Rise





# Riverside Plaza fire, Exeter



Devon • Cornwall • Isles of Scilly



Local Resilience Forum



ID	Hazard	Lead	CM %		ID	Hazard	Lead	CM%	
HH002	Influenza-Type Disease (Pandemic)	PHE	81%	↓					
SW005	Flooding: Major coastal/tidal	EA	89%	↑					
SW006	Flooding: Major fluvial	EA	89%	↑					
SW007	Localised fluvial flooding (flash flooding)	EA	92%	↑					
HH001	Epidemic Influenza	PHE	77%	↑					
IA017	Major Pollution of Controlled Waters	EA	65%	↓					
IA022	Major Air Quality Incident	EA	87%	↑					
IT006	Failure of local electricity network due to severe weather and technical failure	CC	80%	↓					
SW002	Prolonged Low Temp, Heavy Snow and/or Ice	Torbay Council	80%	↓					
SW012	Severe effusive volcanic eruption	CC	33%	↔					

**3 x VERY HIGH**  
**7 x HIGH**

*Last update: 10 Apr 17*



# Keys to Success

- ▶ Build the relationships now – not in the crisis!
- ▶ Make the effort to work together all the time
- ▶ Have mutual objectives
- ▶ Trust each other

The LRF is a team!



# Any Questions?

Neil Hamlyn  
LRF Manager



@neilhamlyn

[www.dccisprepared.org.uk](http://www.dccisprepared.org.uk)

